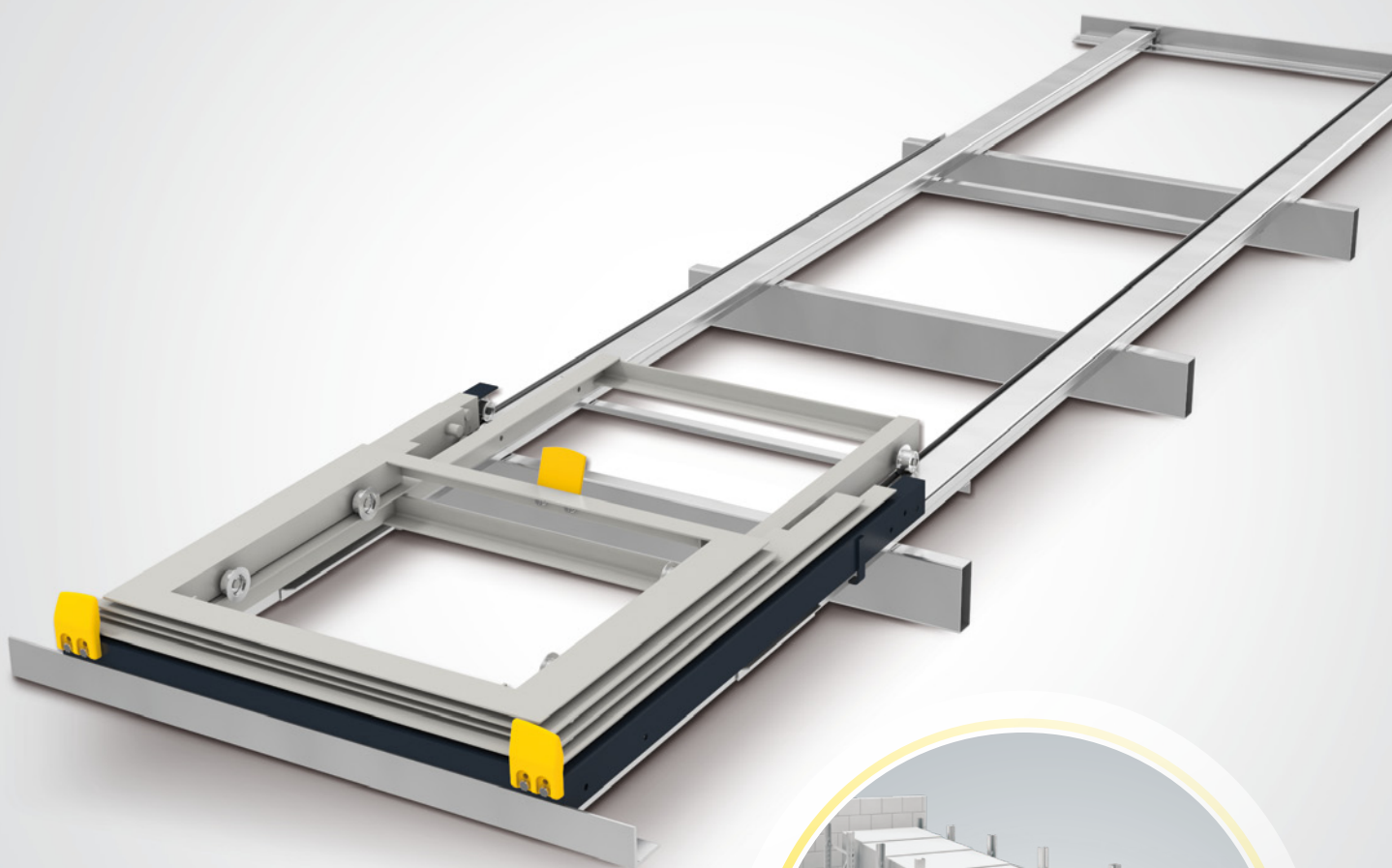




INSPIRED BY EFFICIENCY

INTERROLL CART PUSHBACK

PF 2430



- 🔄 **Crossway storage**
of pallets and containers in
LIFO configuration



THE BENEFITS ARE PLAIN TO SEE



CART PUSHBACK: HIGH PERFORMANCE FOR LIFO STORAGE CONFIGURATION

- Standard installation – compatible with all racking
- Efficient handling – indicator for empty pallet spaces
- Less space needed – 30 % space saving in comparison with conventional racking
- Higher throughput – more than 25 % faster than Drive-In
- Improved safety – no forklift activity within the actual rack storage lane
- No energy consumption – inclined guide rails with slope of 3 %
- Efficient solution – average Return-on-Investment in less than three years

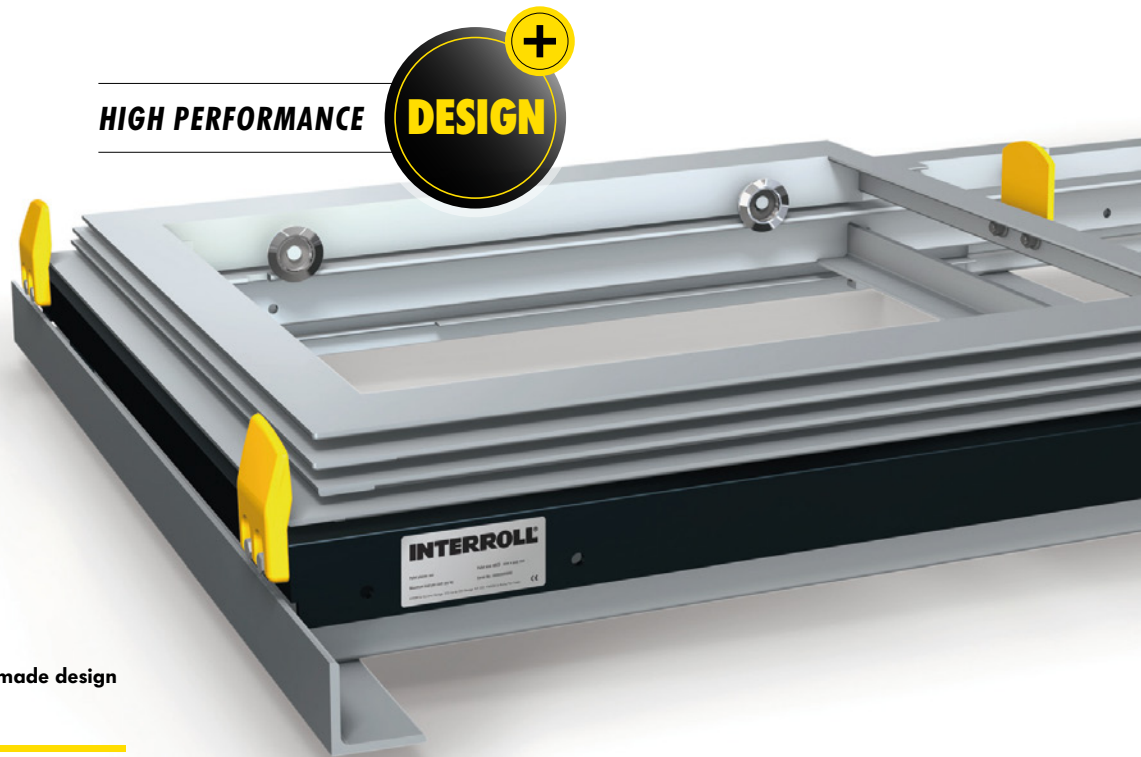


DESIGNED TO MEET YOUR EXPECTATIONS:

- High capacity – load of 1,400 kg per pallet space. Possible until 6 pallet places
- Robust design – allowing heavy duty uses
- Compatible with Euro pallets, GKN Chep pallet, Australian pallets, Asian pallets, and any type of low quality pallets and containers
- Premium quality carts and rails – powder coating
- Easy and safe to use
- Proven design thanks to FEA (Finite Element Analysis) calculations and tests

HIGH PERFORMANCE

DESIGN



Rigorous conception and tailor made design for high performance

- Good adaptability – existing Drive-In storage can be retrofitted with Interroll Cart Pushback
- Nested carts delivered on site for quick assembly

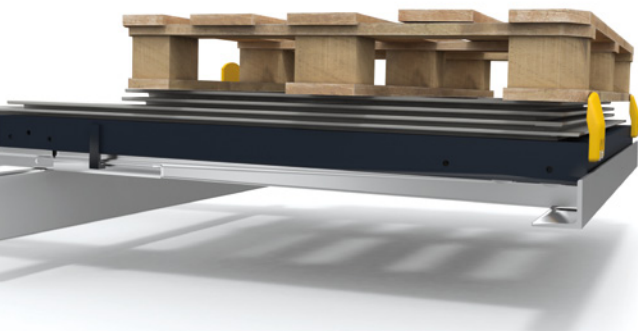
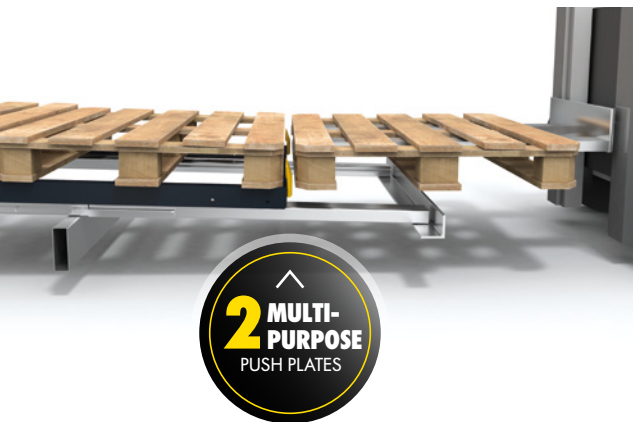


TECHNOLOGY, SAFETY, MULTI-PURPOSE PLATE

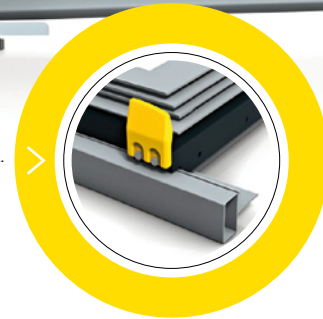


MULTI-PURPOSE PUSH PLATES:

- Two strong moulded metal push plates at the front to ease handling operations
- Fixed with screws for easy change
- High visibility – thick and painted in yellow for safety reasons
- Rounded shape and big radiuses to not damage the pallet
- Reduced space between the push plates and the top cart (41 mm) – better stability of the loads
- Compatible with angle beams
- Compatible with Australian box beams (double lane)



Narrow gap



SAFE LOADING AND EASY OPERATION:

- The 2 push plates help to position properly the last pallet
- Pushing on 2 plates reduces stress on carts



HEIGHT GAUGE:

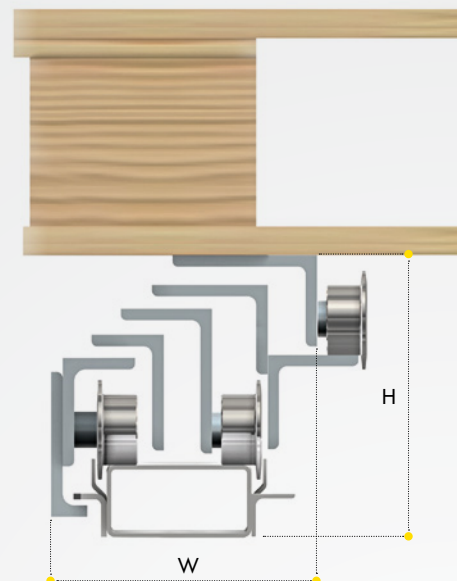
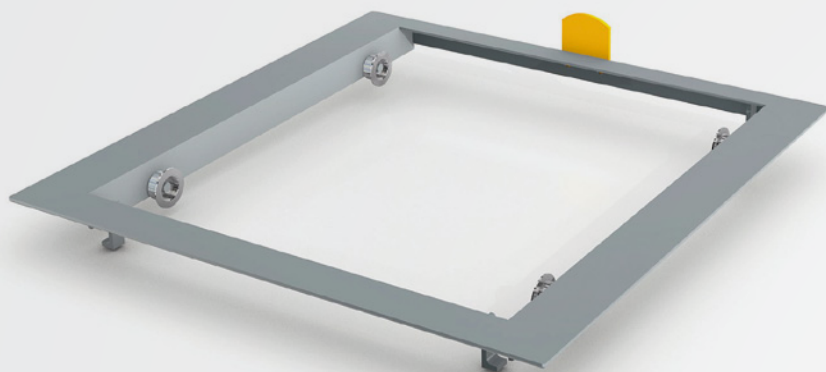
- The push plates are attached to the lower cart and protrude beyond the highest cart, thus acting as an end stop holding all pallets in position
- While loading, the push plates act as a strip-off stop to prevent the pallet from being dragged off the cart when the forklift drives back



FULL LANE INDICATOR:

- As soon as the last possible pallet has been loaded, the push plates are no longer visible. This indicates a full lane

IT'S ALL IN THE DETAIL...



ROBUST CARTS:

- Heavy duty carts of 8 mm thickness perfectly withstand shocks during handling operations
- The upper cart is equipped with one rear plate, to properly position the first pallet onto the cart frame
- Compact cart design offers more space for pallet handling or allows the addition of an extra storage level
- Optimised cart width for better stability of the load

COMPACT DESIGN

LANE DEPTH	H	W
2 deep	123 mm	50 mm
3 deep	139 mm	99 mm
4 deep	157 mm	119 mm
5 deep	175 mm	150 mm
6 deep	190 mm	175 mm

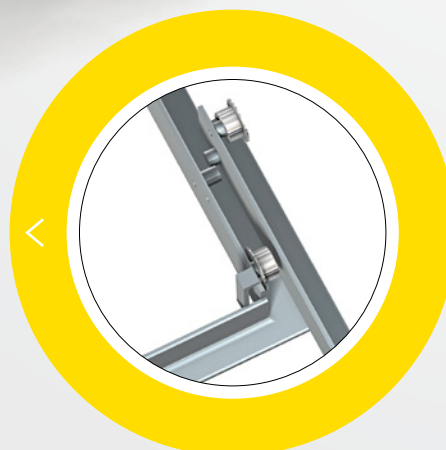
FLANGED STEEL WHEELS:

- Diameter 48 mm
- Rolling length 24 mm
- Electro galvanized
- Perfect rolling even in deep freeze application
- Tightened by screw

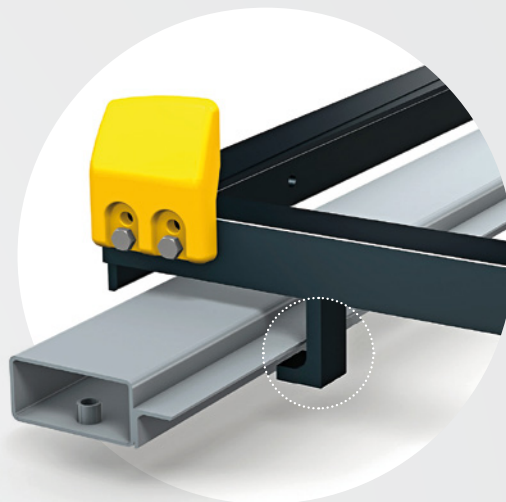
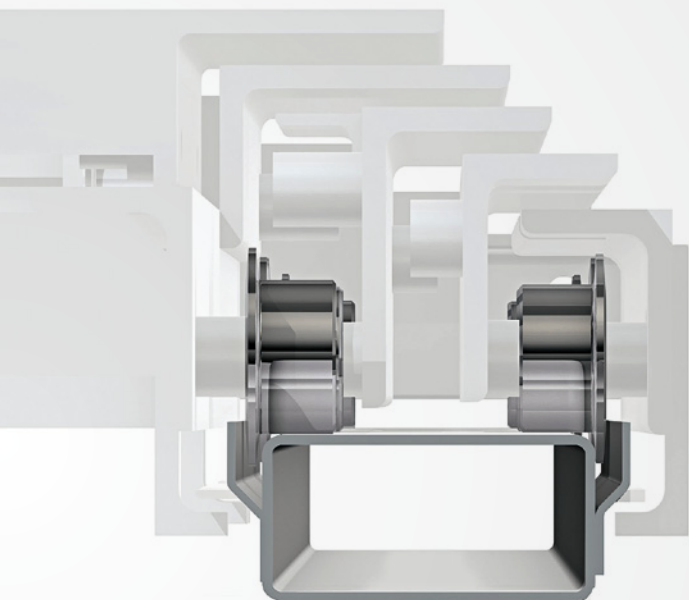


LINKED CARTS:

- Carts are linked together jamming in the storage channel: this ensures better and more secure handling

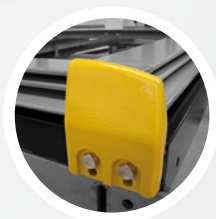


...AND NOTHING'S LEFT TO CHANCE



GUIDED CARTS:

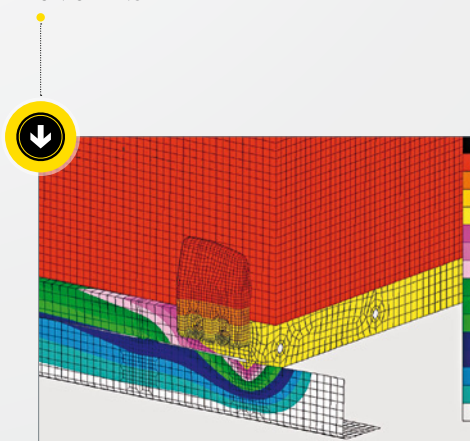
- Welded guides on rails to prevent lateral dislodgment of carts
- All carts feature 4 lift-out protectors to prevent accidental dislodgment
- These “hooks” are cut from a rigid angle profile for more resistance



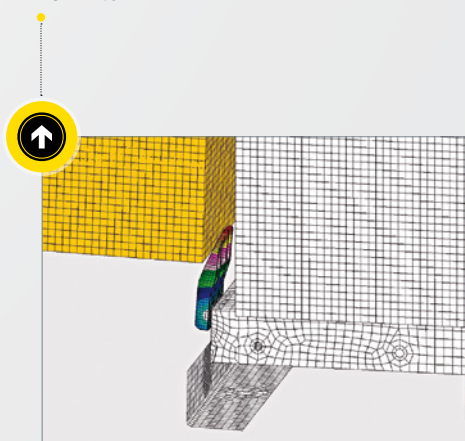
PROVEN CONCEPT:

- Interroll Cart Pushback has undergone the FEA calculations (Finite Element Analysis) and lifetime tests

UNLOADING



LOADING

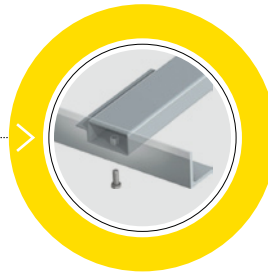




INTERFACE WITH RACKING EASY INTEGRATION GUARANTEED!



- Interroll Cart Pushback is compatible with all the racking systems worldwide
- Beams are installed on a 3 % slope (the lowest point at the loading/unloading side)
- Ideally, angle beams should be used at the front and the rear of the channel (box beams at the rear available in as an option). In the middle, standard box beams should be used
- Rails are equipped with inserts for easy and fast assembly



ASSEMBLY IN 4 STEPS ONLY



1

Racking assembly



2

Rails fixation
2 screws per rail



3

Carts control.
Nested carts delivered
on site



4

Ready for use



Inspired by efficiency

Established in 1959 Interroll has grown to become the world's leading supplier of key products for internal logistics. Whether boxes, pallets or soft goods are to be handled, no other supplier has such a complete product range on offer. That is why system integrators, OEMs and operators select Interroll as their partner for their internal logistics business. Worldwide. The Interroll global network ensures quick delivery and superior service for every local customer. We inspire our customers and provide opportunities for them to increase efficiency.

Interroll.com

Interroll reserves the right to modify the technical features of its products at any time. Technical information, volumes, data and features are only rough guidelines.

© Interroll 2014